

Our offices/warehouse



**July:**

104° in the publisher's office

**February:**

58° with ice on the inside of the windows

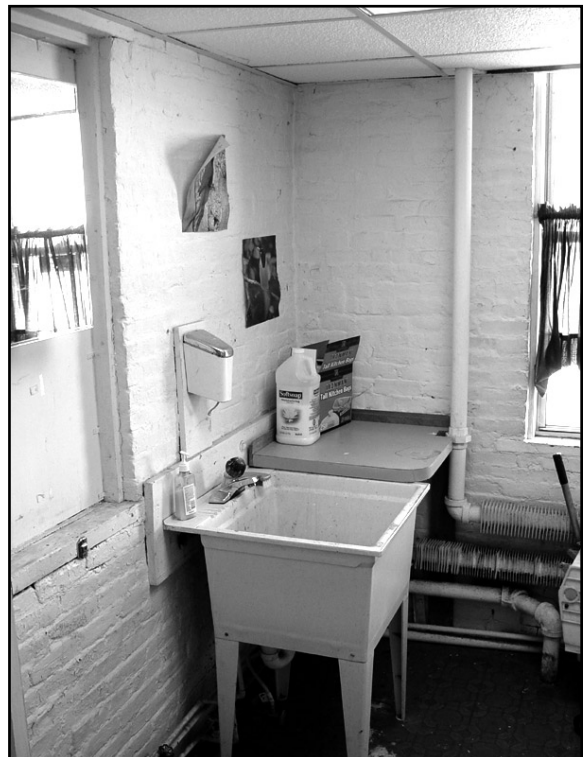
**January-December:**

No hot water in the bathroom.

*Our offices in this 19th century mill building are spartan so we can devote your contributions completely to our apostolate: the production of fine Catholic books.*

## The Grand Foyer

This is the entrance to Sophia Institute Press. You get to our offices by going past the pallets of books and through the rough opening there in the back.



## The Bathroom

The landlord does not provide hot water so we have no hot water in the bathroom

**104° in summer,  
58° in winter**

That's the publisher's office located right here in the noisy warehouse, along with the other offices. In summer, the sun beats down on the roof above; the cavernous ceilings collect so much heat that the temperature rises above 100°. We have to close for days at a time because it's unsafe to work here. Winter brings bitter cold that the building's primitive heating system (the bare pipes in the picture) cannot defeat. We wear our coats in the office through much of February.

